

INTUS ACM Access Control Manager

INTUS ACM

- + Fast Access Control Managers complete with security package, encryption, integrated firewall and multi-level password system
- + Configurable and programmable
- + Reader and door power supply from the Access Control Manager
- + Individually optically decoupled inputs for powerful failure protection
- + Tamper contact, fire and burglar alarm system interfaces



Access Control Manager
Building management

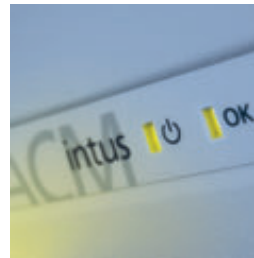
Intelligence on every level.

INTUS ACM from PCS.

As the control center for an access control system, the Access Control Manager is equipped with a powerful computer and integrated with a security system based on distributed intelligence. Supplied with variable master data from a central host, the Access Control Manager uses predefined time/area profiles to decide whether a door is to be opened or to stay closed. Even if the network connection to the host fails, the Access Control Manager reliably controls the connected access readers, the doors with their monitoring contacts, the barriers and turnstiles or the attached video recorder. Decentralized intelligence for powerful failure protection. For your security.



INTUS ACM8e Rack with Patch-Panel



Access Control.

Powerful and flexible

- but still simple.



INTUS ACM8e Wall



INTUS ACM Access Control Managers are state of the art systems that keep on working reliably even if in continuous operation for years on end. The models from the INTUS ACM8e and INTUS ACM40 series offer optimum performance scalability: from two to sixteen doors, rotating barriers or turnstiles, from 10,000 up to 180,000 master records and bookings. The powerful 500MHz AMD LX800 CPU in the INTUS ACM8e models controls the 16 connected access readers reliably and extremely fast even if complex programs or massive number of data are used. And of course the ACM supports the connection of any type of PCS access reader, including RFID, chip-card and biometric terminals. Also, the INTUS ACM features "Easy Addressing" for simple plug & play installation: just connect point-to-point, and the ACM will automatically detect all the readers. It doesn't get any simpler than that.

INTUS

ACM

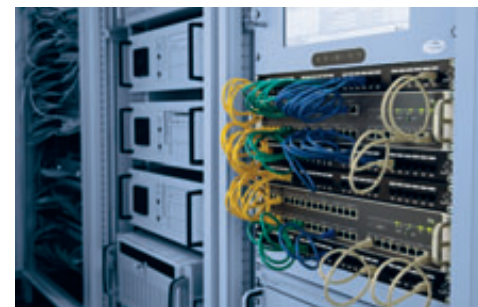
Three-fold security for maximum protection.

All the INTUS ACM Access Control Managers from PCS are equipped with a full security package to protect your sensitive access data:

- An embedded firewall protects the access system against attacks from the internal corporate network.
- Data encryption to the host and access readers prevents unauthorized monitoring on the lines.
- A three-level password system for remote set-up and maintenance defines detailed change privileges for different user groups.

The Access Control Managers are equipped with alarm interfaces for vandalism and provide a burglar alarm system interface. Multiple integrated test functions facilitate installation and reduce the service and maintenance times. All the inputs are individually optically decoupled. Even if a reader fails due to a voltage surge on the feeder line, all the other readers will keep on working.

INTUS ACM, the Access Control Managers from PCS: extraordinarily reliable, extremely secure and exceedingly fast. That's how access control works.



INTUS ACM8e Rack with Patch-Panel



INTUS ACM8e Rack

PoE



INTUS ACM8e nominated for GIT security award 2006 and certified with INNOVATIONSPREIS 2007 ITK.

Technical Specifications:

INTUS ACM series.

ACM



	INTUS ACM40	INTUS ACM8e Wall	INTUS ACM8e Rack
Connectable doors (max.)	4	16	16
Connectable readers (standard) upgradeable to	2 4	4 8 or 16	8 16
Reader interface	RS485 individually optically decoupled or Wiegand	RS485 individually optically decoupled	RS485 individually optically decoupled
Master records ¹	12,000 - 33,000	26,000 - 99,999	26,000 - 99,999
Bookings ¹	11,500 - 30,000	24,000 - 161,000	24,000 - 161,000
Integrated power supply, reader	for up to 4 reader	for up to 16 reader	for up to 16 reader
Integrated power supply, door opener	12V / 0.8A	12V / 2A 24V / 1A	12V / 2A 24V / 1A
Interfaces (alarms, burglar alarm system, etc.)	4 inputs (optically decoupled) 1 bistable relay 2 switching relays	4 inputs (optically decoupled) - 4 switching relays	4 inputs (optically decoupled) - 4 switching relays
Emergency power supply (accu)	Integrated (optional) for 4h / 2,500 operations	Via external UPS	Via external UPS
Digital input (DI) for frame contact, door opener contact	8 (individually optically decoupled)	16 (individually optically decoupled)	16 (individually optically decoupled)
Digital output (DO) for door opener	4 (switching relays)	16 (switching relays)	16 (switching relays)
Installation	Wall-mounted device	Wall-mounted device	19" rack-mounted device, 2 height units (HU)
Cabling	Screw-type terminals	Screw-type terminals	RJ45 (via patch panel)
Host interface (standard) optional	10/100 BaseT V.24 / RS485	10/100 BaseT V.24 / RS485	10/100 BaseT V.24 / RS485
CPU	ARM9 / 200MHz	AMD LX800 / 500MHz	AMD LX800 / 500MHz
Memory (standard) upgradeable to	1 MByte 2 MByte	1.5 MByte 5.5 or 9.5 MByte	1.5 MByte 5.5 or 9.5 MByte
Power supply (max.)	230V interference-proof industrial power supply unit, optional: 12V (SELV)	230V interference- proof industrial power supply unit	230V interference- proof industrial power supply unit
Weight	6.5 kg (with accu: 8.4 kg)	9 kg	8.5 kg
Dimensions (HxWxD) in mm	255x369x64 255x420x90 (with accu)	336x511x100	90x438x353

¹ Sample calculations for TPI-tasc with access control

Connectable INTUS devices

- INTUS 300ro, INTUS 340H/350H, INTUS 400, INTUS 500, INTUS 600, INTUS 640H access readers
- INTUS 1600 subterminal
- INTUS long-range reader (via Wiegand IF)
- INTUS FP, INTUS 600FP fingerprint reader
- INTUS PS palm vein authentication (via Wiegand IF)

Identification reader technologies

- RFID (Mifare, Hitag, Legic)
- Fingerprint
- Palm vein authentication
- Chipcard (memory/processor)
- Magnetic card
- Barcode
- Additional readers on request

Software

- Realtime operating system
- DHCP as option
- Integrated Webserver for status information
- Remote configuration
- Data encryption
- Configurable in TPI, programmable in TCL

Standards: CE compliant

Technical specifications subject to change without notice.

INTUS terminals include software developed by the Open SSL project for use in the OpenSSL Toolkit (<http://www.openssl.org>) and cryptographic software written by Eric Young (ey@cryptsoft.com).

PCS, INTUS, DEXICON, INTUS LBus and "PCS. The terminal people." are trademarks of PCS Systemtechnik GmbH. All other brands and product names are trademarks or registered trademarks of the respective companies and organisations.



PCS Systemtechnik GmbH
Pfaelzer-Wald-Str. 36
81539 Munich
Phone +49-89-68004-550
intus@pcs.com

Ruhrallee 311
45136 Essen
Phone +49-201-89416-0

Hofzeile 24
1190 Vienna
Phone +43-1-3670-302

www.pcs.com