

INTUS Software Communication Administration
Administration Configuration Parameterization
Communication Administration Configuration Diagnosis
Configuration Parameterization Diagnosis
Software Communication Administration Configuration Parameterization Diagnosis

INTUS Software

- Data collection
- Communication
- Administration
- Diagnosis



INTUS Software – the perfect interplay.

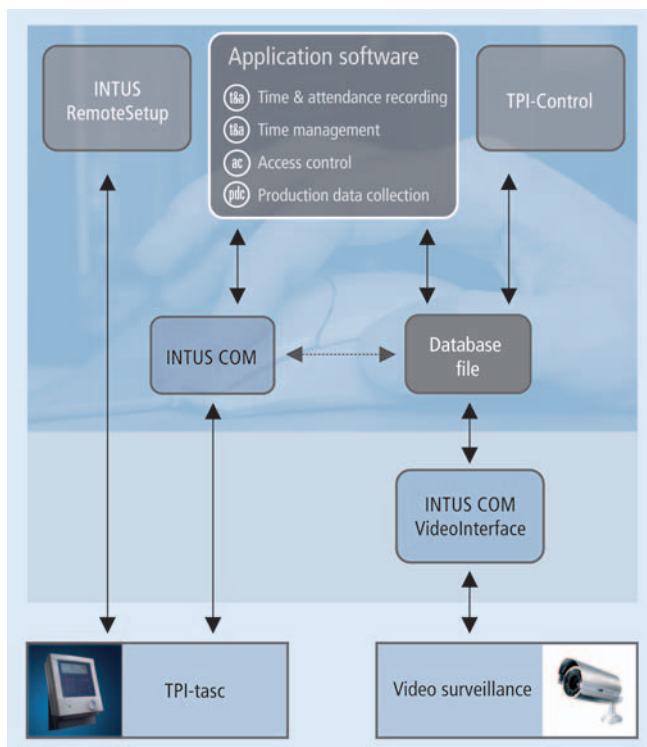
This powerful software package assists you in safely and efficiently commissioning all of your INTUS devices. Designed to ensure a functionally safe installation and secure operation, INTUS Software is the standard software used for data acquisition, communication between INTUS hardware and application software, and terminal programming or parameterization. INTUS Software allows the easy and cost-effective configuration and analysis of your system and reduces the required development time and learning period for partners and end users so that they can take full advantage of all the technical capabilities offered by the INTUS terminals and access control managers (ACMs).



HW/SW

INTUS Software consists of four components:

- **INTUS COM – communication and administration** interfaces INTUS terminals and ACMs to any application software via database, file or TCP/IP sockets – simply and efficiently.
- **TPI-tasc – parameterizable data collection** downloadable data collection software with optimized performance that ensures the reliable operation of INTUS terminals and ACMs through parameterization.
- **TPI-Control – configuration for TPI-tasc/TPI** is used to parameterize TPI-tasc and allows the fine-tuning of TPI to specific project requirements.
- **INTUS Remote-Setup – setup and testing package** allows the simple and fast analysis of all the INTUS terminals and ACMs in the network and configures all the required setup parameters.



Effective data exchange with INTUS COM.

INTUS COM is the administration and communication software for INTUS terminals and access control managers (ACMs). With INTUS COM, PCS offers its customers and software partners a powerful scalable middleware. INTUS COM is designed to connect INTUS terminals, ACMs and their attached access readers with any type of application software in a simple and reliable way that eliminates any additional development requirements. Through its intuitive graphical user interface (Java), INTUS COM manages the secure data traffic with terminals and ACMs under any operating conditions and monitors the network of PCS components. INTUS COM offers powerful functionality.

Additional functions

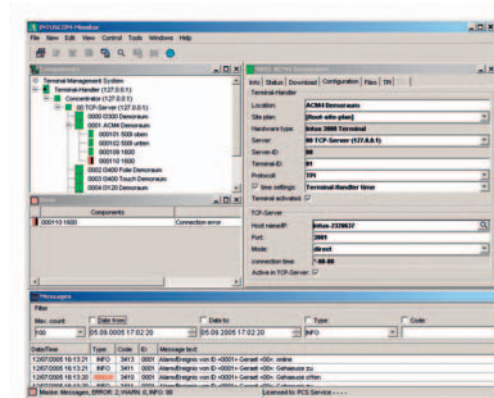
- Representation of all connected devices in a tree structure
- Status information for each device
- Device status in plain text format and color-coded for easy identification
- Automatic full or incremental download of files required by a terminal, using small packets to allow intermediate bookings
- Automatic clock updates in the terminals/ACMs
- Permanent monitoring of the data connection to/from the terminals/ACMs
- Usage of INTUS COM restricted to authorized users (password protection)
- Battery state can be polled
- Interactive data download on demand

System requirements

- **Operating system:**
Windows 98, ME or higher, Windows NT or higher, LINUX
- **Database**
(required when using the database interface):
MS SQL Server, MSDE, Oracle and MS ACCESS
- Other databases on request



Communication
Software HW/SW
Administration



Secure, fast and current information with INTUS COM.

The data exchange between application software and INTUS devices is implemented via database, TCP socket, or file interface. Terminal configuration data is transparently available for the application as an XML file or database table. INTUS COM's multi-socket architecture delivers excellent data throughput with the capability to continue booking at a terminal even while a master data download is in progress. INTUS COM is efficient. INTUS COM processes can be launched as services under Windows XP or run in the foreground for error diagnostics. Event logging and e-mail alarm options rapidly provide information on errors.

TPI-tasc: parameterization instead of programming.



PARAMETERIZATION

TPI-tasc, the PCS standard program written in TCL, is designed to take the programming burden off application developers. TPI-tasc is a parameterizable, downloadable data collection software for time & attendance recording, access control and production data collection. TPI-tasc provides all the standard functions for time management and access control required by the data collection devices, such as card checking, card number administration in the device, communication handling, plausibility checks, monitoring, etc. TPI-tasc is parameterized via TPI-Control.

Functions

- Support for all devices in the INTUS 3000 range (INTUS 3100, 3105, 3120, 3300, 3400, 3450, 3500, ACM4, ACM8, 3000ACM) as well as their attached INTUS 300, 400, 500, 1600, 1600FP, INTUS FP access readers
- Recording of bookings for time management/PDC and access control
- Card/tag checking against master records
- Support for all standard PCS readers
- Master record administration in the terminal
- Definable master records, configurable number of master records to be managed
- Company code check (up to 5 facility codes with a max. length of 10 characters each)
- Freely definable booking types
- IN/OUT plausibility check
- Enable/disable alarm system

Dialog definitions

- Definitions for function keys, function key labels, and message texts (facilitates translation)
- Multiple function key assignment
- Function key selection by time control or storage function
- Definitions for user dialogs via function steps
- Optional local or remote balance (up to 10 balances of 13 bytes each can be represented)

Date and time functions

- Clock setting
- Definition at date and time format
- Automatic daylight saving time (DST) switch-over

Access control functions

- Autonomous access control
- 99 special days
- Max. 9999 access profiles
- Definition of relay activation times
- Door release at certain points in time/doors permanently open
- Interactive door opening/locking
- Door monitoring with alarm messages
- Terminal or master record dependent PIN code
- Duress alarm
- Anti-passback
- Room monitoring
- Bag check

General settings

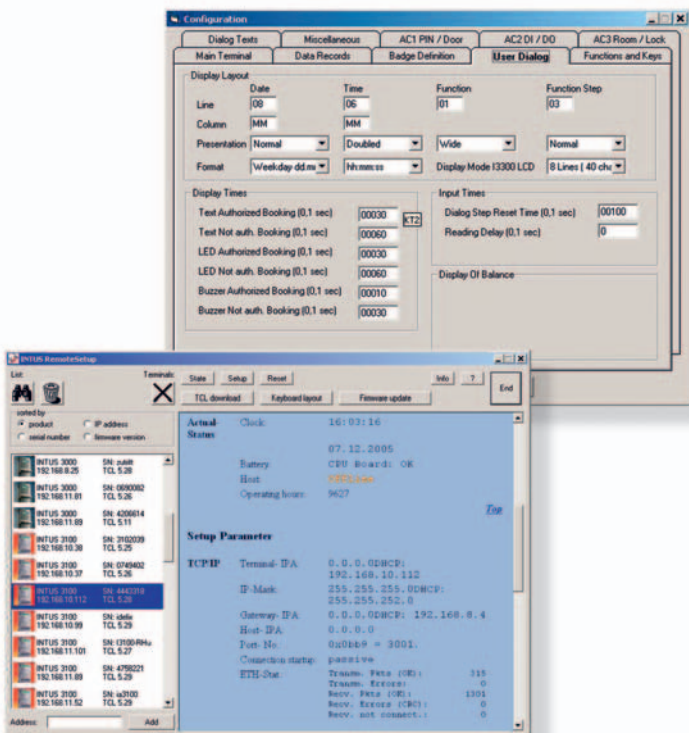
- Buzzer for good and/or bad reading
- Timeout definitions
- 15 mailbox texts with definition of display frequency in the master record
- Optional card number entry via numeric keypad
- Record buffering, logical record acknowledgement
- Records sent to the host: booking record, status record, information record, acknowledgment record, alarm record, secure parameter download, configurable
- **Elevator control** possible with a special version of TPI-tasc

TPI = Terminal Parameterization Interface
TPI-tasc = TPI-terminal application software, configurable

Soft

Easy configuration with TPI - Control.

TPI-Control is a MS Windows-based configuration program for TPI-tasc, the standard data collection program for all INTUS terminals and Access Control Managers. Connected access readers are also parameterized via this program. TPI-Control manages and configures various PCS hardware parameters depending on the device type, for example as shown below:



- Display texts
- Size and position of the display text
- Relay activation times
- Function key assignments
- Buzzer control
- Record type identifiers for the data traffic to the host
- ID card/tag layout
- PIN code check
- Time definitions for time-dependent function key control

INTUS Remote Setup:
everything
at a glance.

INTUS RemoteSetup is a MS Windows-based service and diagnostic tool for INTUS terminals, INTUS servers and INTUS Access Control Managers connected to a network (Ethernet or TokenRing).

INTUS RemoteSetup can be used to configure the complete setup of the connected devices and to display the status of each device via its status page – quickly and easily.

Additional functions

- Display of all the INTUS devices connected to the network irrespective of their IP address
- Setting the IP address of the connected INTUS devices
- Manual reset
- Interactive definition of matrix touch key assignment
- Matrix touch key assignment can be saved
- Terminal Firmware update (TCL)
- TCL program download to the terminal/ACM

ware

PCS and partners .
A strong connection .

More than 100 software companies and system houses as well as installers and planners throughout Europe offer sophisticated, integrated, and complete solutions for access control, time & attendance and production data collection with deployment of the INTUS product range. Many of these solutions are based on the INTUS Software from PCS. INTUS installations can be found in small enterprises with 20 employees as well as in large international corporations with thousands of employees.

Our partners provide solutions for every application in every industry, including time & attendance recording, visitor management, driving services, risk management, cafeteria data management, rostering, HR logistics, shift planning, fuel data collection and the night watchman's round, to name but a few. The right solution for you is certainly among them.



PCS. The terminal people.®

HW/SW

Proven design ,
innovative technology ,
efficient training .



25 years of experience in the development of terminals and an installed base of more than 100,000 devices speak for themselves. With a team of experienced and skilled employees, PCS offers service and training for our hardware and software products and helps you connect your INTUS terminals in no time at all.



ABB, Adelholzener, AEG Home Appliances, Alcan, ATOMIC, Aventis, Bayer, Biochemie, BSH Bosch Siemens Home Appliances, Buderus, Claas, Coca Cola, Enercon, Esprit, Fujitsu Siemens, Grohe, Heidelberger Printing Machines, Jever, Kappa-Hoesch, Krombacher, König Bauer Albert, Linde, Löwenbrau, Maxdata, Meyer-Werft, Miele, Mitsubishi, Müller Milch, Märklin, NOKIA, Onken, Paulaner, Pfeleiderer, Porsche, Readymix, Schüco, Sennheiser, Stiebel Eltron, Thyssen Krupp, Veltins, Viessmann, Vorwerk, Warsteiner Brewery, Westfleisch, Wilo, Zapf, Zentis, Haribo (AT), Michelin (FR), SNI (NO), Valeo (HU), BayWa, Bertelsmann, BMG Music, Bofrost, Brück Elektrofachgroßhandel, Cordes & Gräfe, Drogeriemarkt, Eismann, Elefanten, Fielmann, Görtz Shoes, Hertie, Ingram Micro Distribution, Karstadt Quelle, Müller Drogerie, Peek & Cloppenburg, Steilmann, Tengemann, Westfleisch, Wöhr, H&M (CH), Migros (CH), Allianz Elementar, Citybank, Continentale, D.A.S., Deutscher Sparkassen- und Giroverband, HUK Coburg, Brandenburg Investment Bank, KfW Kreditanstalt für Wiederaufbau, LV1871, Postbank, Quelle Bank, Quelle Versicherungen, Raiffeisenbank Wettingen, SEB Bank, Sparkasse Köln, SwissRe Reinsurer, Ticino Cantonal Bank (CH), Lucerne Cantonal Bank (CH), Raiffeisenbank Wettingen (CH), Zurich Cantonal Bank (CH), Diakonie Krankenhaus Mannheim, Fulda Clinic, Ingolstadt Hospital, Krankenversorgung der Bundesbahnbeamten, Bad Salzungen District Hospital, Eggenfelden District Hospital, Landsberg District Hospital, Neustadt/Waldnab District Hospital, Oberhavel District Hospital, Bamberg Neurological Hospital, Cologne Postal Hospital, Harlaching Municipal Hospital, Münster University Hospital, Dusseldorf University Clinic, Schönthal Nursing Home (CH), Cantonal Laboratory + Hospital (CH), Sonnenhof Klinik Bern (CH), ADAC, Alcatel, ARCOR, Bahn AG, DATEV, DIN, Munich University of Applied Sciences, GEW Rheinenergie, GfK, Hapag Lloyd, Hotel President, Stuttgart Penitentiary, LeCoS GmbH, Lufthansa, Maas Logistics, Nokia, Post AG, T-Systems, Baseler Verkehrsbetriebe (CH), Czech Radio (CZ), Salzburg Airport (AT), Heathrow Cargo Handling (GB), Innsbrucker Kommunalbetriebe (AT), ABB, Alcan Deutschland, Aventis, BayWa, Bischoff & Klein, BSH Bosch Siemens Home Appliances, Claas, Continental Teves, DaimlerChrysler, Die Continentale, DIN, ENERCON, GfK, Hoechst, IKON, Brandenburg Investment Bank, ITT Automotive Europe, Kappa, Kassenärztliche Vereinigung Bayern, Krones, König Bauer Albert, Maxdata, Mitsubishi, Märklin, NOKIA, Pfeleiderer, Quelle Bank, Quelle Versicherungen, SEW Eurodrive, Stadtwerke Bremerhaven, Stiebel Eltron, SULO, Münster University Clinic, Dusseldorf University Clinic, Valeo, Viessmann, Vorwerk, Wilo, Wirth, Zapf, Biochemie (AT), Continental Teves (HU), Howag Kabel AG (CH), Innsbrucker Kommunalbetrieb (AT), SEW Usocome (F), Valeo (HU), Voigt AG (CH), ...

© 2006 PCS Systemtechnik GmbH



PCS, INTUS, DEXICON, INTUS LBus and "PCS. The terminal people." are trademarks or registered trademarks of PCS Systemtechnik GmbH. All other names of products and services are trademarks of the respective companies and organisations.



PCS Systemtechnik GmbH
Pfaelzer-Wald-Str. 36
D-81539 Munich
Phone +49 - 89 - 68004 -550
Fax +49 - 89 - 68004 -555
intus@pcs.com

PCS Systemtechnik GmbH
Ruhrallee 311
D-45136 Essen
Phone +49 - 201 - 89416 -0
Fax +49 - 201 - 89416 -10
intus@pcs.com

PCS Systemtechnik GmbH
Vor dem Lauch 19
D-70567 Stuttgart
Phone +49 - 711 - 9073 -330
Fax +49 - 711 - 9073 -329
intus@pcs.com

PCS Systemtechnik GmbH
Service Switzerland
Weieracher Str. 12
CH-8184 Bachenbuelach
Phone +41 - 1 - 8639 -618
Fax +41 - 1 - 8639 -690
intus.ch@pcs.com

www.pcs.com