

INTUS Video-Convision

- + Video surveillance integrated with access control
- + Analog cameras and videosevers with hard disk for long-time recording
- + Analysis software for scanning of stored video streams
- + Fully integrated into INTUS COM software environment



Technical Data

INTUS Video-Convision

The Convision product family facilitates an easy and fast installable video surveillance or video documentation in combination with an INTUS access control system. Using *INTUS Video-Convision* clear and documented sequences are made of anonymous alarm messages.

The video solution consists of analog video cameras and the videosevers for digitizing the video signal and transferring it via TCP/IP. In addition the INTUS COM VideoInterface performs the interfacing of the video solution with an INTUS access control system.

Convision video cameras

Day and night cameras for connection to the Convision videosevers. The cameras are suitable for indoor and outdoor use (IP65).

- Sensor: 1/3" color CCD (Sony)
- Resolution: 470 TV lines (CC-5303)
540 TV lines (CC-5304IR)
- Minimum illumination: 0 Lux (CC-5303)
0,002 Lux (CC-5304 IR)
- Temperature range: -10°C ... +50°C
- Interface: BNC (75 Ω)

Convision CC-5303	Convision CC-5304IR
Bullet camera / IR LEDs	Dome camera / IR LEDs



Convision Videosever

The access to the camera will be obtained via the LAN and the Convision videosever. Depending on the model up to 16 cameras can be connected to a videosever. For the setup of the videosever and live view-

Convision V200	Convision V410 Plus / V610 Plus
----------------	---------------------------------



ing of pictures a standard web browser can be used (MSIE, Mozilla). The recorded video frames can also be scanned in the browser (MSIE only). In case of an alarm the video server stores up to 32 pre- and post-alarm pictures. These will be transferred via email to the INTUS COM video interface which stores the pictures in the INTUS COM database.

Videsevers with hard disk are outstandingly suitable for long-time recording of video frames. A separate tool for analyzing the recorded video frames is part of the product delivery.

Videsever	V200	V410 Plus	V610 Plus 19"
No. of cameras	2	4	6
Hard disk	—	40 GB	160/300 GB

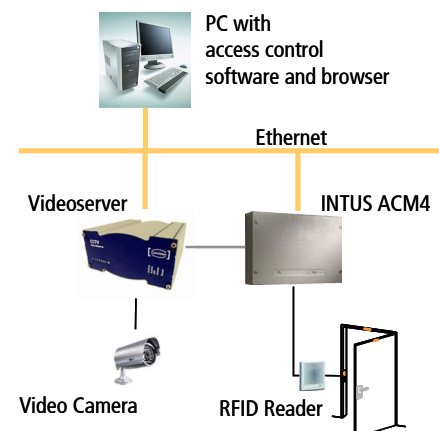
- Interface: camera: BNC (75 Ω)
computer: 10/100BaseT
- Compression: JPEG (up to 25 pictures/sec)
- Configuration: via browser
- Temperature range: 0°C ... +50°C

INTUS COM VideoInterface

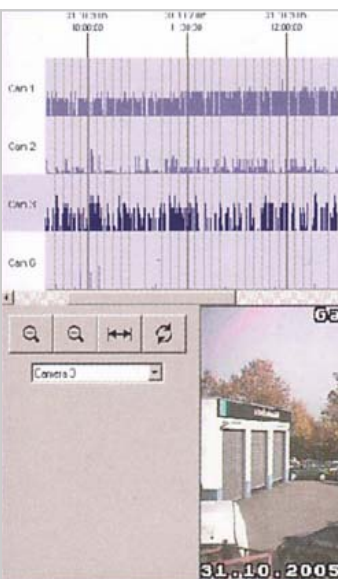
INTUS COM VideoInterface is an expansion option for INTUS COM. It stores the alarm video sequences coming from the Convision videosever in the INTUS COM database for further use. INTUS COM VideoInterface supports up to 4 cameras connected to an Convision videosever (depending on model).

Video documentation for access control

Convision videosevers and cameras can be used in combination with INTUS access control managers and INTUS COM VideoInterface for the documentation of access events. Thereby detailed pictures are available for extensive analysis of events. Alarm situations can be analyzed more efficiently and false alarms can easily be avoided.



Technical specifications subject to change without notice.
PCS, INTUS, DEXICON, INTUS LBus and "PCS. The Terminal People" are trademarks of PCS Systemtechnik GmbH. All other brands and products names are trademarks or registered trademarks of the respective companies and organisations.



PCS Systemtechnik GmbH
Pfalzer-Wald-Str.36
D - 81539 Munich
Phone +49-89-68004-550
Fax +49-89-68004-555
intus@pcs.com

D-45136 Essen
Phone +49-201-89416-0

D-30519 Hanover
Phone +49-511-8759-130

D-70567 Stuttgart
Phone +49-711-9073-330

A-1190 Vienna-Austria
Phone +43-1-3670-302

Service Switzerland
CH-8184 Bachenbuelach
Phone +41-44-8639-618

www.pcs.com