



BUILDING SECURITY

Modern and networked solutions from access control to visitor management and video surveillance.

YOUR PARTNER FOR BUILDING SECURITY



Security begins with a strong partner. As experts in building security, we work with you to develop a tailor-made security concept that sets you up for the future.

Proven solutions for every need.

Security is something we know all about: At PCS, we have been developing hardware and software for building security and time recording for over 40 years. Companies from all sectors organize their access control precisely and successfully with the powerful PCS solution. We have been supporting our customers for many years as a partner in building security for professional access control, visitor management and video surveillance.

We think ahead and offer scalable solutions that grow with your requirements - innovative, User-friendly and at the cutting edge of technology. With PCS, you can be sure that you are choosing a future-oriented solution.

You can be sure of that.

Our experienced team will accompany you reliably through all project phases: From planning and installation to commissioning - and for many years beyond. Does your company have big plans? No problem: your security system grows with you. Forward-looking planning and long-lasting products and services make it possible. The protection of your company buildings and premises is in good hands with us.



To the PCS Download Center

Simply scan the QR code or visit our website and get your relevant documents as a PDF.



Security is not the same as safety.

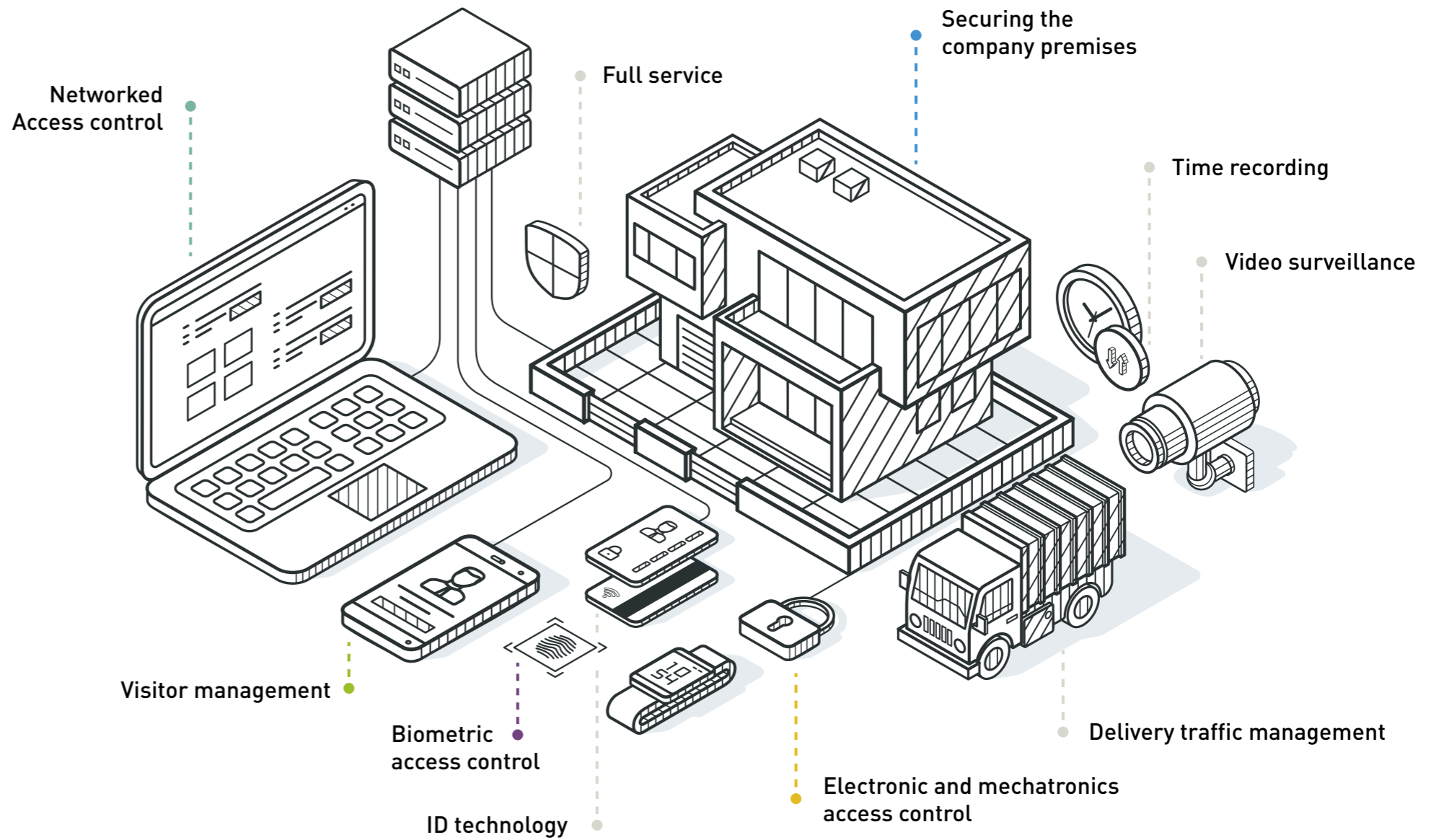
No two companies are the same. And even within an organization, each area has individual security requirements: while the reception area, for example, should be open to the public, access to the boardroom is more critical. Production areas need to be protected against sabotage and highly sensitive areas such as data centers or laboratories require the highest security precautions.

Inconspicuous protection.

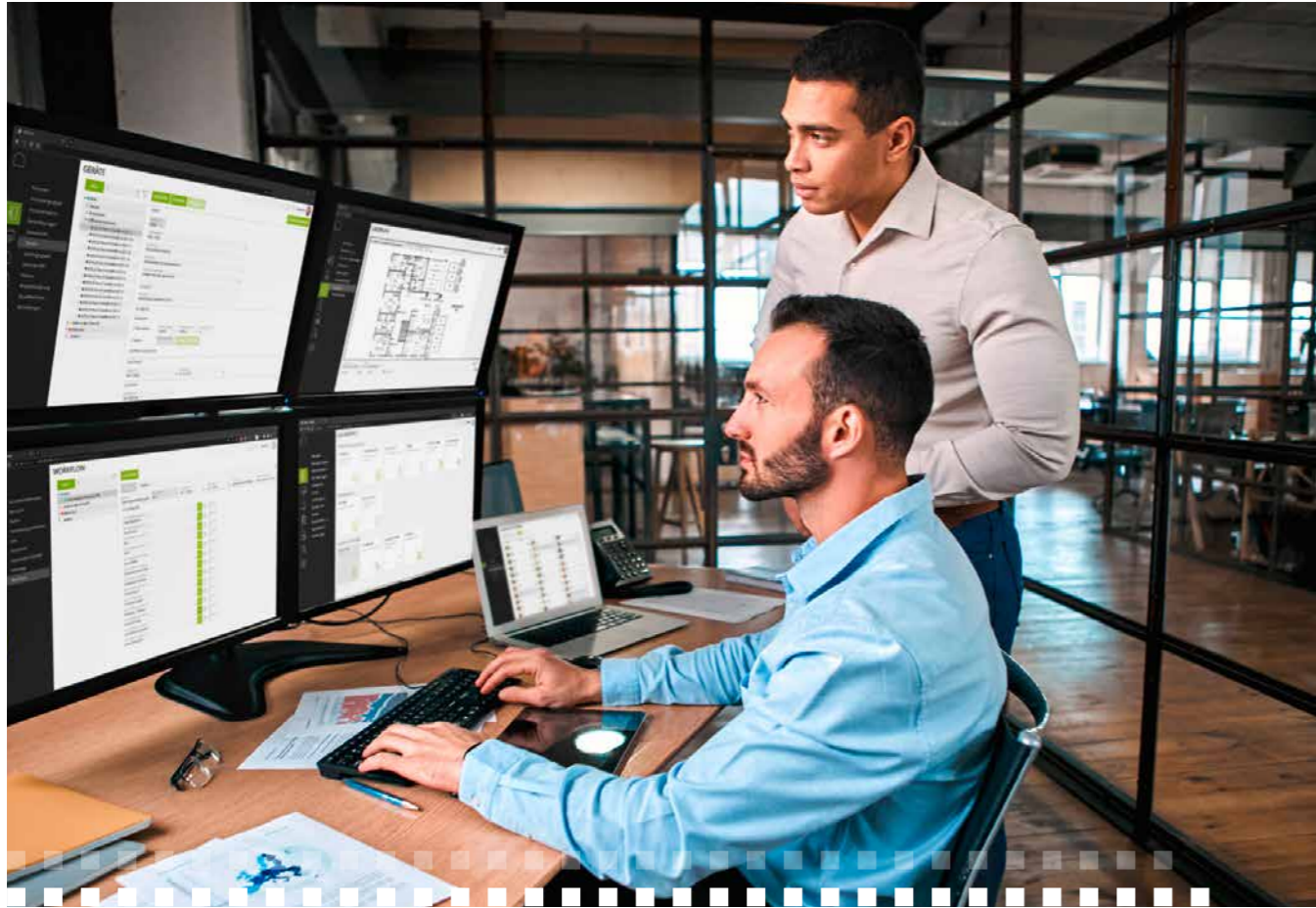
Incidentally, we know from experience that a good security concept must function unobtrusively and reliably in everyday life. That's why we integrate your protection system harmoniously into your operational processes and the everyday lives of your staff. This leaves everyone free to focus on the essentials and concentrate fully on their work.

Networking brings added value.

Security systems should no longer be stand-alone solutions. Ideally, you should network access control with other systems, such as your ERP system, video surveillance or intruder alarm system. All applications then interact with each other to ensure the best possible protection. To ensure successful networking at all levels, PCS provides API interfaces and a certified SAP interface for reliable data communication.



A NETWORKED SYSTEM



Everything comes together here.

Granting access to Permissions, locking out unauthorized persons - this is the basic principle of access control. It sounds simple, but depending on the structure of the company and the structural conditions, it can be quite tricky. The solution: an intelligent system consisting of hardware and software components that is precisely adapted to the individual conditions in the company.

Building security from a single source.

Our product portfolio offers the right components for every application scenario, from our scalable software solutions to reliable INTUS hardware such as electronic access readers and mechatronic locking systems. We also offer solutions for video technology and perimeter protection such as barriers, fences and turnstiles in cooperation with leading manufacturers. One thing applies to everything: one fits the other - and everything together perfectly meets your requirements.



The INTUS ACM access control managers intelligently control the access readers. These are supplied with master data from the central master computer and decide whether to block or open doors, gates, etc.



We plan your system.

After a comprehensive analysis of your requirements, we work with you to plan your security system: What hardware do you need for which areas? What structural requirements need to be observed? How should the software be configured? And which functions are useful? It all starts with 1,000 questions. At the end: an intelligently thought-out concept that suits your company.

"The PCS access system is extremely flexible. I was also impressed by the service and customer focus of the PCS team, who also supported us during operation."

Dagobert Trummer,
DB Regio Bayern Plant
Maintenance

In an increasingly networked world, protecting sensitive areas and controlling access is crucial. PCS access control software is far more than just a means of securing entrances. It offers comprehensive

solutions that combine security, efficiency and cost-effectiveness. Invest in the future of your Security and discover the many possibilities offered by modern access control systems:



Security at the highest level

- Protection against unauthorized access control with real-time monitoring
- Audit-proof logging and GDPR-compliant tracking, reports and analyses
- Alarm and emergency systems, Site Mapse

Professional access control with extended functions

- Multi-factor authentication and biometric authentication
- Antipassback, as well as zone and time control
- Role concepts for the simple creation of access rights

Increased efficiency, usability and scalability

- Automated access management with flexible customization options for Access Permissions
- Integration with other systems for easier administration and centralized control of securityrelated processes
- Simple and centralized management of the physical components of your access system, such as INTUS readers and access control managers



SAP® Certified
 Integration with SAP S/4HANA®
 PCS has been a certified SAP software partner since 1990.

PROFESSIONAL SOFTWARE FOR TIME RECORDING & ACCESS MANAGEMENT

DEXIOS

Cloud installation

Web application enables easy access from anywhere



Workflow module

Simple and traceable assignment of authorizations

High modularity (pay-per-use)

Flexible and scalable for your company

DEXICON

Biometric access control

For securing high-security areas



Extended access control functions

Z. E.g. through integrated video documentation and access control

Multifunctional visitor management

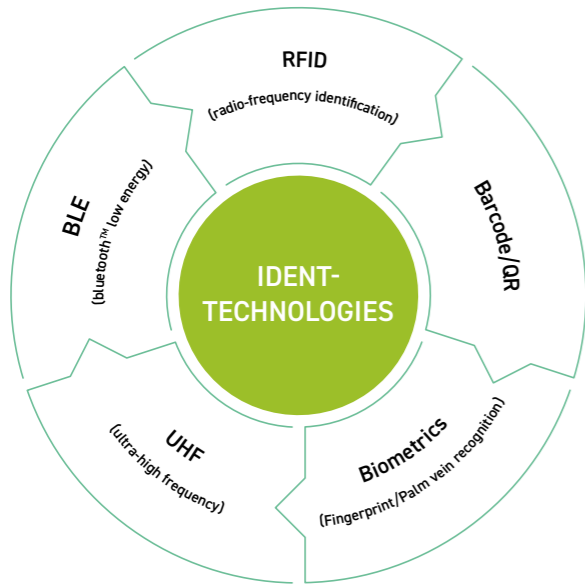
With a standardized VISIT connection

In times of a shortage of skilled workers, automation and efficiency are also becoming increasingly important in building security.

By integrating modern technologies and adapting to individual requirements, you can optimize your access control system and at the same time react flexibly to future challenges.

That's why we offer you scalable and modular solutions for all industries and company sizes. Whether on-premise or in your cloud: our flexible solutions will accompany you in the long term and grow with your company.

ELECTRONIC ACCESS CONTROL FOR ALL AREAS



Electronic access readers open the door to Permissions. With our innovative INTUS product family, we offer you a comprehensive wide range of state-of-the-art access control readers, optionally with RFID technology, Blue tooth® or with biometric fingerprint or palm vein recognition.

A solution for every situation.

No matter where and how you want to install your access readers: Whether on the wall or door frame, surface-mounted or flush-mounted, in switch ranges or intercom systems, outdoors or indoors - we have the right product for you. Factory gates and barriers are also secured with access control.

Incidentally, INTUS access readers are also suitable for people counting: as soon as a predetermined number of people have booked access control, the room is disabled for further door opening.

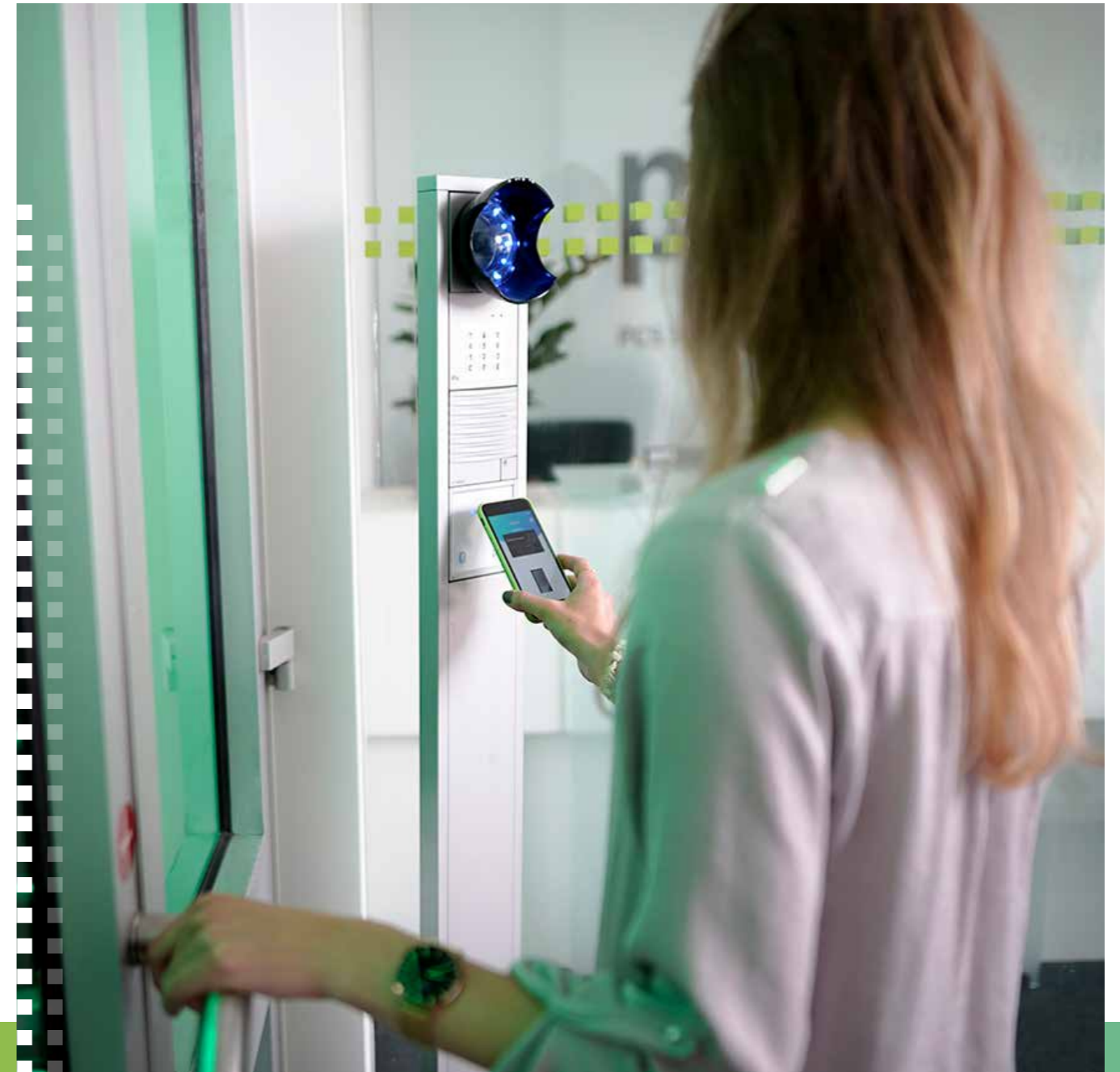


Well shielded.

All Access Permissions are centrally administered by the software and forwarded via the INTUS Access Control Manager to the INTUS reader with AES-encrypted data transmission. The readers are also equipped with a tamper contact so that an alarm is triggered if the device is tampered with. Security is the focus of access control. Particularly important for the protection of all critical infrastructures.

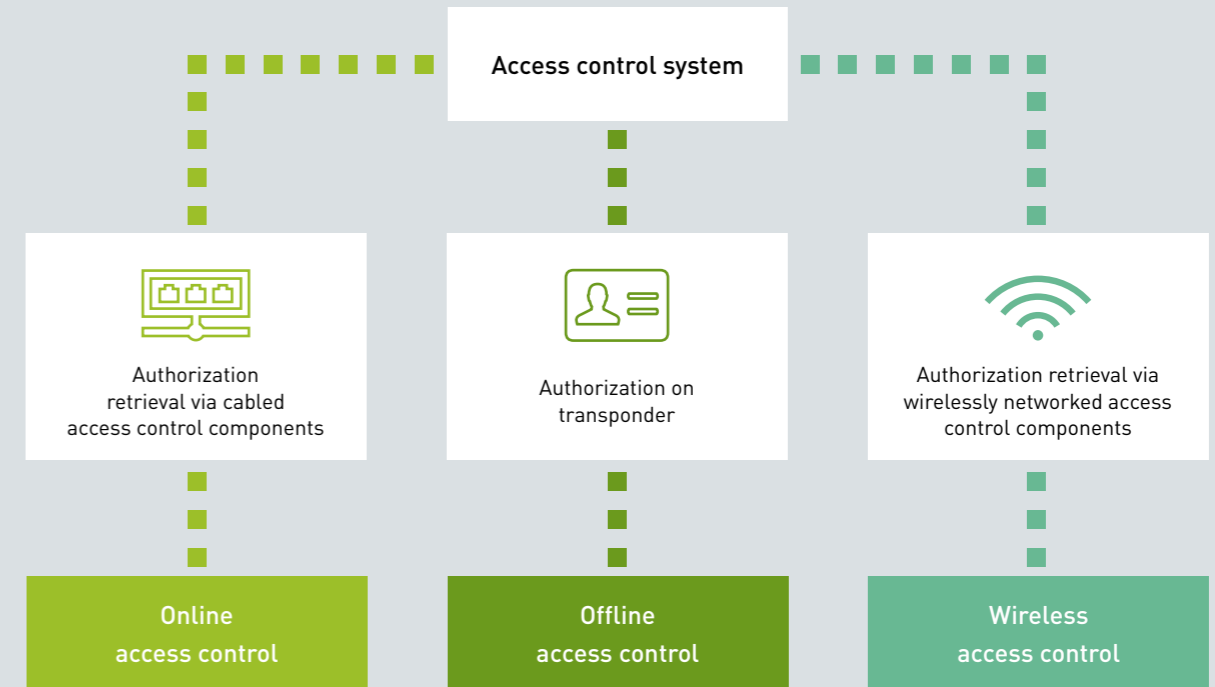
The plus: Our offer to you

We support you in selecting the access readers that perfectly match your structural conditions. We then install the hardware and software and ensure smooth operation. Do you want to migrate an existing system to the latest RFID generation? We can help you with the migration.





Online access control enhanced by INTUS Flex: seamless integration



DOOR TERMINALS

WIRELESS SECURITY

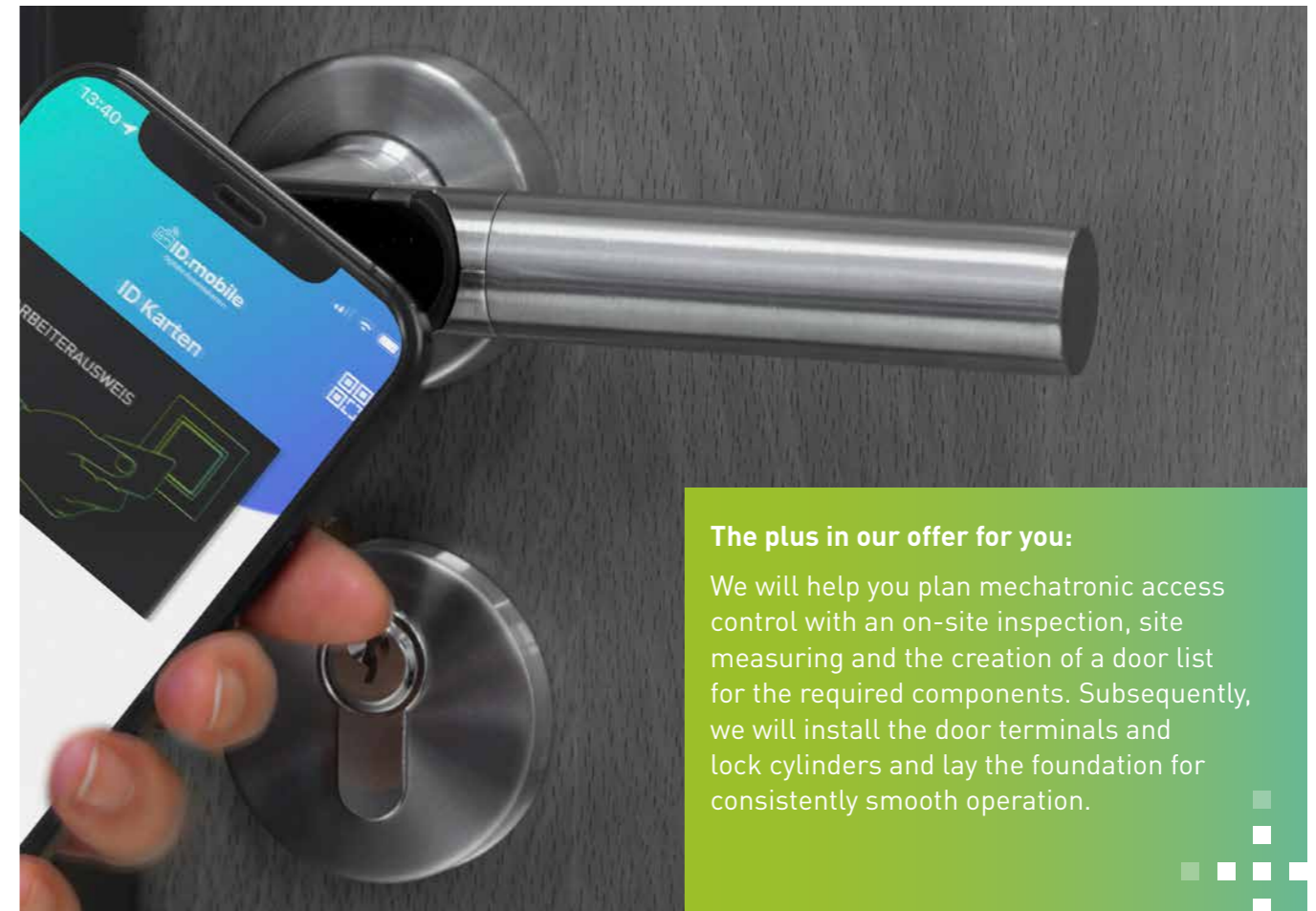
Mechatronic solutions for access control.

Mechatronic door terminals and lock cylinders are a practical and cost-effective option to implement access control with as little effort as possible, in particular in older buildings that are to be retrofitted with a security system or in the case of fire doors that are very challenging to wire. The mechatronic device is integrated into the door handle and operates reliably and almost maintenance-free in battery mode.



A single "card" for every door.

Very convenient: Our INTUS Flex mechatronic door terminals and lock cylinders are integrated with online access control via a common RFID badge system. Access authorizations are written to the transponder medium on a day-to-day basis, for example, when a time recording terminal is used. Alternatively, the mechatronic systems can be wirelessly connected to the higher-level access system.



The plus in our offer for you:

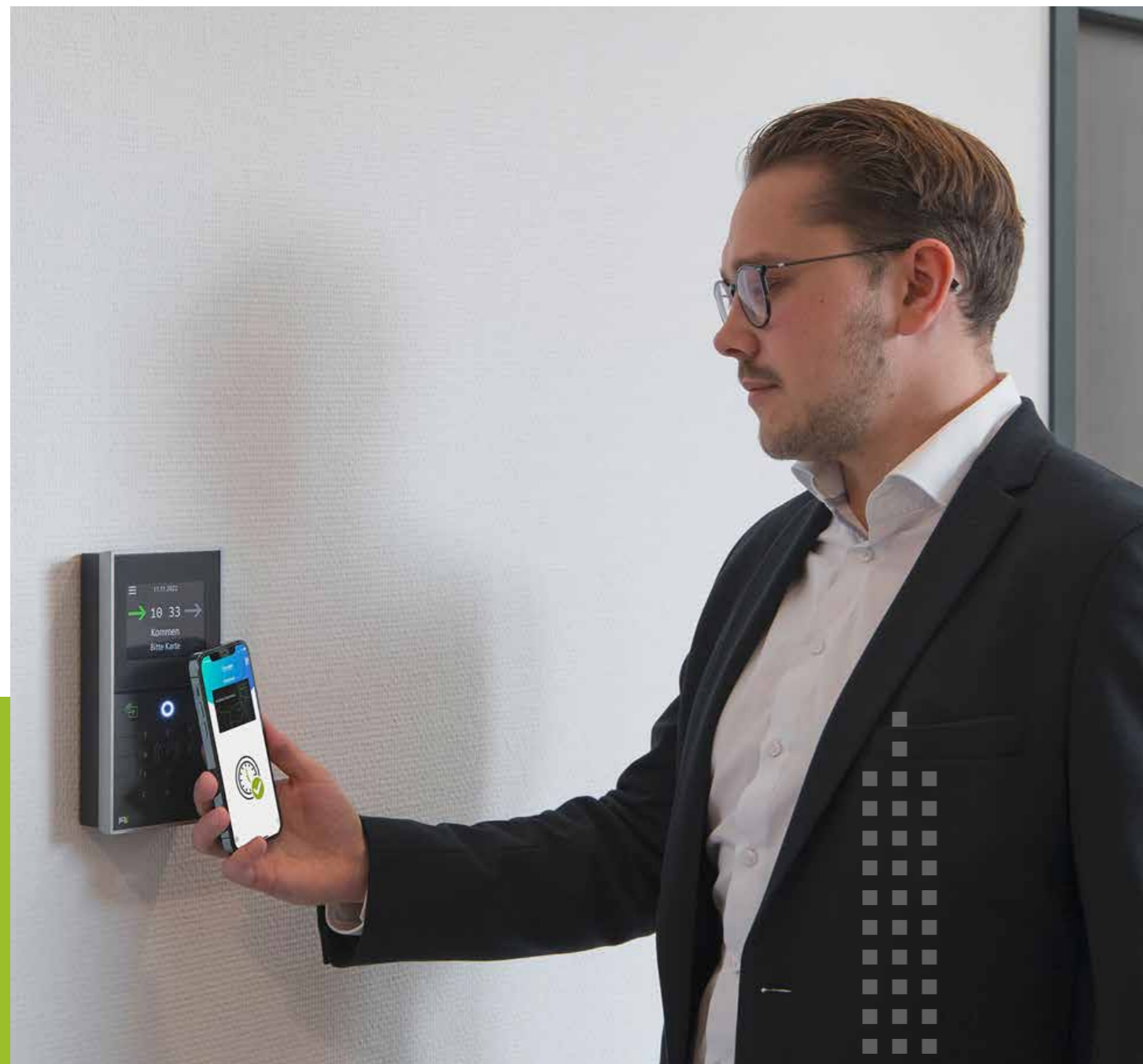
We will help you plan mechatronic access control with an on-site inspection, site measuring and the creation of a door list for the required components. Subsequently, we will install the door terminals and lock cylinders and lay the foundation for consistently smooth operation.

IDENTIFICATION TECHNOLOGIES THE KEY TO SECURITY

ID media for your employees.

What used to be the key is now the RFID transponder. The difference is that it can do much more. As a personalized employee ID card, it opens up numerous possibilities: From access control and time recording to cashless payment in the canteen and fuel data recording - just hold the card up to the reader. On spacious parking lots or in outdoor

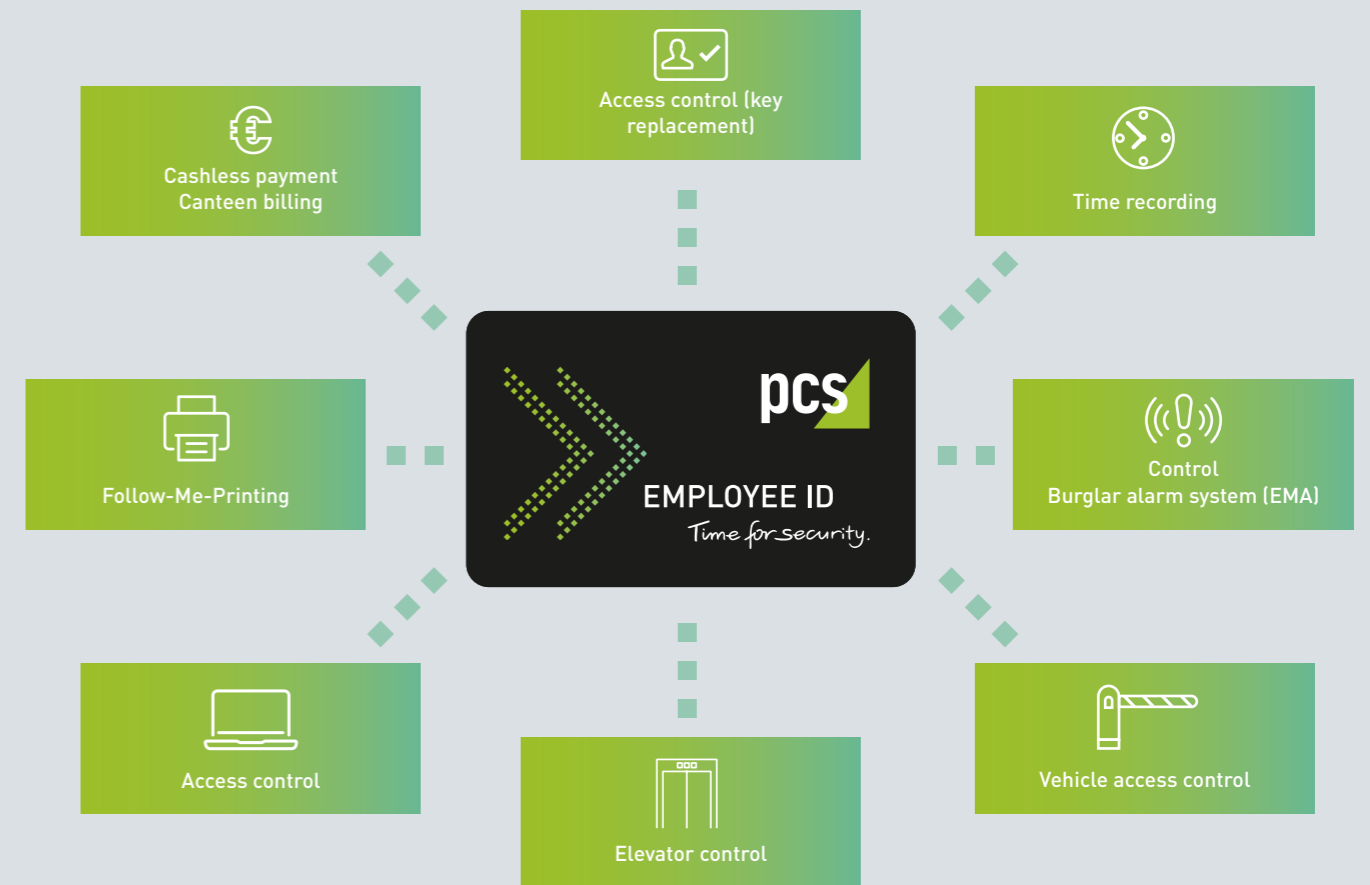
areas, UHF long-range readers recognize the UHF transponders stored in vehicles. The smartphone can also be used as an identification medium: You can create a virtual company ID card using the ID.mobile app. Communication between of the INTUS hardware and the ID.mobile app takes place via Bluetooth®.



Card with personality.

What functions does your ID medium need? Which technology is the right one? We advise you on all questions, find the best solution and administer your Mastercard for you. We test existing cards for compatibility and define the future standard. Thanks to careful archiving, customer-specific parameters are available in the long term.

Everything on one card.





VISITOR MANAGEMENT KEEP AN EYE ON ALL YOUR VISITORS

Visitor management.

Professional visitor management makes an impression. It also provides added security and makes work easier for your reception staff. VISIT documents all external persons on the premises in an audit-proof and traceable manner. Guests can register before they arrive, allowing them to register quickly on site. External service providers receive a temporary visitor badge and can use it to move around the site independently. The moment they leave your company again, access rights are automatically deactivated.

Safety instruction.

Is safety training mandatory on your company premises? Then make it easy for your employees and visitors: the training can be completed in self-service at any time - including a final learning success check.



Delivery traffic management.

Visitor management also facilitates the handling of delivery traffic on your premises: the system documents delivery traffic from arrival and approval through to acknowledgement at the loading ramp. All movements are reliably recorded and stored in a revision-proof manner. The status of the delivery vehicles can be viewed at any time.

The plus: Our offer to you

We design your visitor management the way you need it: Choose from numerous modules such as delivery traffic management, electronic security briefing, self-registration and much more. We support you in commissioning the system and train your employees. So that from the start everything runs smoothly.

THE BIG PICTURE AT A GLANCE

**Video surveillance.**

Video surveillance is recommended for targeted monitoring of certain areas or to protect against vandalism. We plan, install and configure the complete system: from installing the cameras to commissioning the powerful video management software.

Video and access control.

Video data on defined events at access readers can be saved in the access software. This makes it easier to investigate an alarm and allows a quick response in an emergency. Incidentally, video support is also suitable for access control: license plate recognition via camera enables automated barrier opening when entering the parking lot or underground car park.

**Securing the outdoor area.**

Security doesn't just start at the main entrance, but at the outer boundary of the site. That's why our security concepts start here: We use separation systems such as turnstiles, locks or barriers to control access control to the site. Passage barriers and turnstiles ensure that unauthorized persons are prevented from "slipping through". We cooperate with well-known manufacturers such as Wanzl for guidance and safety systems or ZABAG for perimeter protection.

The separation systems are always equipped with RFID readers. On request, we can supplement these with video surveillance cameras and intercom systems. For the highest security requirements, combine biometric palm vein recognition with the separation system to identify people beyond doubt. In this way, you can ensure that only Permissions are granted access control at the outer boundary of the site.

**The plus: Our offer to you**

We support you in the planning and installation of your video surveillance system. During an on-site inspection, we work with you to define relevant areas or excluded private zones. We then select the components and configure everything so that you can put your surveillance system into operation immediately. We plan the protection of your outdoor area as an integral part of your security concept.

SECURITY FOR SPECIAL PURPOSES



Biometric procedures for sensitive areas.

Whether data center or laboratory: Double security is required in critical company areas. This is where the INTUS 1600PS biometric palm vein recognition system with multifactor authentication comes into its own. Access control is only granted after the card has been checked and additional verification via the biometric feature of the palm vein pattern, which is unique to each person. An effective high-security solution for particularly security-relevant areas.

Certification as a "Known Consignor".

Companies can have themselves certified as "known consignors" by the German Federal Aviation Office, so that air freight goods can pass through customs more quickly. Comprehensive security structures for the company's freight packaging area are a prerequisite for this certification.

PCS advises your company on the organization of security measures for certification with the German Federal Aviation Office. Various organizational measures are essential for the officially recognized "Known Consignor". These include structural and security measures to secure the air cargo packaging area, complete documentation of all access controls and regular functional checks of the security system.

Security concept for IFS Food certification.

The IFS Food certification is a seal of quality for hygienic and safe food production. To prevent tampering in food production, effective access control is part of the process. Certification and thus safeguards the production facilities, among other things.

We support you with a concept for the physical security of your company - a decisive advantage for successful certification.

The company BAUER AG has set up a self-sufficient security system with electronic access control to secure the air freight area. The access system sounds an alarm if a door is left open for too long and the cargo area is no longer protected.

"The access control software is easy to use and easy to understand. Our concept is therefore easy to implement. We have found our partner in PCS."

Markus Stelzer
Basic Administrator Time
Recording / Access Control
BAUER AG

PCS - YOUR STRONG PARTNER



Trust through experience and expertise

- Comprehensive support and advice from PCS experts
- Many years of industry experience and know-how
- Extensive and continuously growing product portfolio



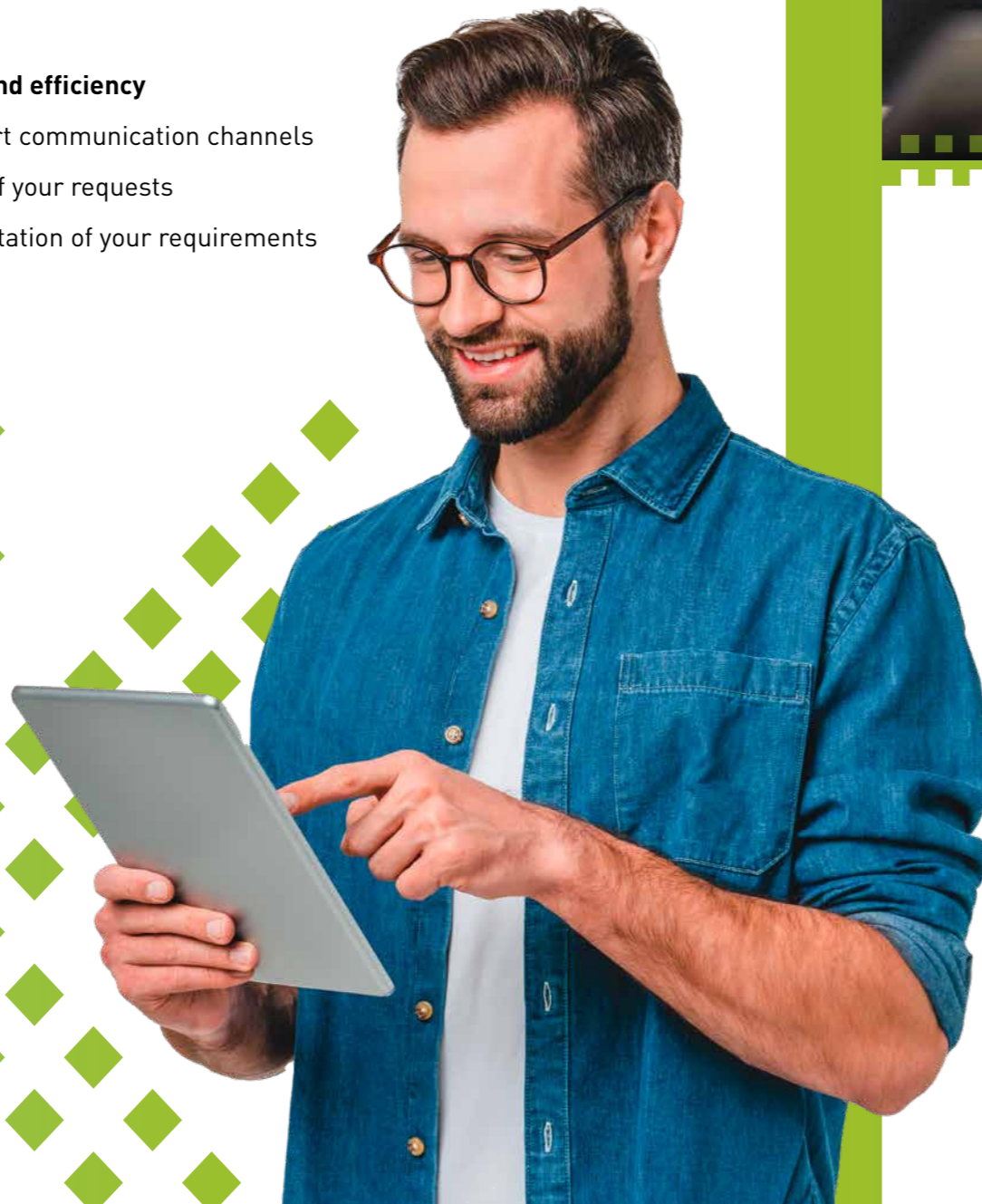
Modern access control with reliability

- Powerful access control for all requirements
- Web-based cloud application with a security-by-design approach
- Software for purchase or as a pay-per-use model
- Investment protection through future-oriented INTUS hardware



Focus on customer orientation and efficiency

- Fixed contact persons and short communication channels
- Fast and effective processing of your requests
- Professional project implementation of your requirements



References

Adelholzener • Agenda • Alupress • Andritz • Augustiner-Bräu • BayWa • Bischof+Klein • BMW Group • Brauerei C. & A. Veltins • BSH Hausgeräte • Caterpillar • Claas • CSL Behring • Daimler • Deutsche Bahn • Deutsches Milchkontor • Dräxlmaier • Doka • EDEKA Zentrale • eins energie in sachsen • Eissmann Automotive • Elbe Flugzeugwerke • Endress+Hauser • Enercon • Engelbert Strauss • Europa Raffinerie • Fraport • Fritzmeier • GEMÜ • GLS General Logistics • GROUP7 • Hans Kupfer & Sohn • Hansgrohe • Hermes Arzneimittel • Hochland • Holborn • HUK-Coburg • IHK Nürnberg • Kamax • Kärcher • Koenig & Bauer • Krombacher Brauerei • Krones • KVB • Leipziger Verkehrsbetriebe • Libri • Liebherr • LOXESS • MEGGLE • Mondini • Neoperl • ORF • Otto Dunkel • Paulaner • Pfeleiderer • Porsche • Porta Möbel • Radeberger Gruppe • Rentschler Biopharma • Rheinfels Quellen • Richard Wolf • Rohde & Schwarz • SEW-Eurodrive • Smurfit Kappa • Sparkasse Neuss • Stadt Castrop-Rauxel • Stadtwerke Essen • Testo • TINETZ • Tiroler Wasserkraft • Universitätsklinikum Düsseldorf • Valeo • Viessmann • voestalpine Böhler • Vorwerk • Wanzl • Warema • Warsteiner Brauerei • Wiegand • Zollner Elektronik • sowie viele weitere Kunden im In- und Ausland

Time for security.



PCS Systemtechnik GmbH
Pfälzer-Wald-Str. 36
81539 Munich
Tel. +49 89 68004 - 0
intus@pcs.com
www.pcs.com

Ruhrallee 311
45136 Essen
Tel. +49 201 89416 - 0

© 2024-05 PCS Systemtechnik GmbH

PCS, INTUS, DEXICON and DEXIOS are registered trademarks of PCS Systemtechnik GmbH. All other names of products and services are trademarks of the respective companies and organizations.