



MECHATRONIC ACCESS CONTROL

INTUS Flex at a glance

www.pcs.com

pcs



INTUS Flex

Flexible and cable-free access control.

Mechatronic access control gives you more flexibility in safeguarding your premises. INTUS Flex mechatronic locking systems are an easy and efficient way to secure new and existing buildings. Installation is simple and fast.

You can choose between two modes of operation. In OSS offline mode, the access authorization for INTUS Flex is written to your RFID medium when booking at a networked INTUS reader or INTUS time recording terminal.

INTUS Flex will authenticate your authorization and make the access decision autonomously – no cabling necessary. Status information and the block list are updated via your RFID medium.

In wireless online mode, radio gateways integrate your INTUS Flex terminal devices via Bluetooth® with your access system. This allows you to assign or revoke authorizations in real time.

All the products at a glance.

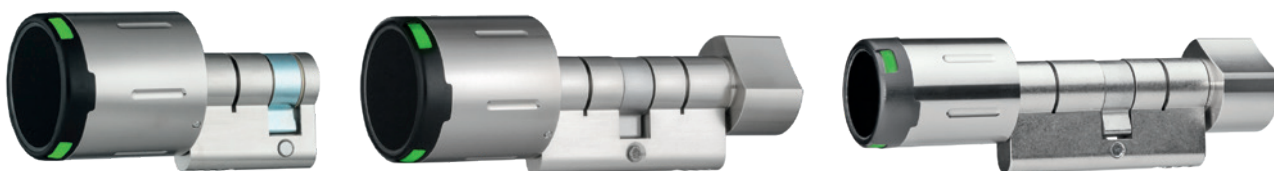
Mechatronic access control using INTUS Flex perfectly supplements classical online access control based on RFID readers. Full integration with PCS access control is ensured.

Mechatronic solutions offer a cost-efficient and quick solution, in particular if doors are very challenging to wire.

INTUS Flex digital cylinder and INTUS Flex digital cylinder S

INTUS Flex digital cylinders and digital cylinders S are installed with a few simple steps. Both cylinder types are certified for use in fire and smoke protection doors as well as for doors situated in escape and emergency routes.

INTUS Flex digital cylinder S consists of a hardened cylinder housing with anti-drilling protection which makes it perfect for use in burglar-resistant doors. The cylinders' modular design and fast battery replacement ensure flexibility.



INTUS Flex E-Handle

The INTUS Flex E-Handle has a timeless design. It replaces a normal door handle. Just hold the RFID medium in front of the door handle and it will be released.

Personalized single or permanent opening and a freely configurable door open time provide for intelligent access control. INTUS Flex door terminals are certified for use in fire and smoke protection doors as well as for doors situated in escape and emergency routes. Outstanding service-friendliness is ensured by a long battery life for up to 160,000 bookings and fast battery replacement.



For application scenarios that require enhanced protection, such as burglar-resistant doors, INTUS Flex digital cylinders are also available with anti-drilling protection.

PCS additionally recommends using self-locking panic locks. They make sure the doors will always be correctly locked but can be opened from the inside in the case of an emergency.

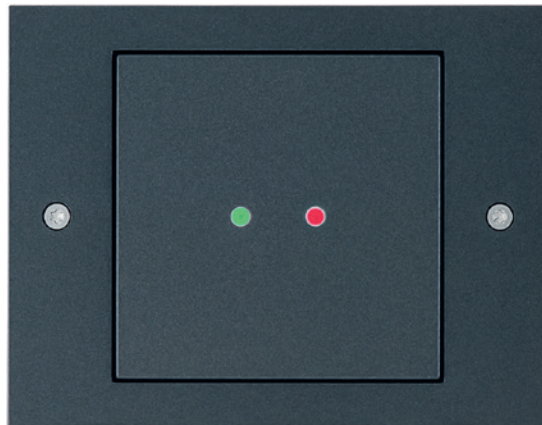
INTUS Flex locker lock

Equip your lockers and cabinets with INTUS Flex locker locks so that you can also open them with your RFID medium. Authorizations will be updated via INTUS online readers. Simply use the existing boreholes to install the INTUS Flex locker lock vertically or horizontally. The lock is powered by a long-lasting battery for up to 120,000 bookings. In a special version, the INTUS Flex digital cylinder can also be used as a furniture lock.



INTUS Flex wall reader

The perfect complement: The INTUS Flex wall reader can be used to control garage doors, rolling gates or barriers at installation sites that are impossible to wire, whether indoors or outdoors.



This is what all the mechatronic components have in common: advanced MIFARE® and LEGIC® RFID technologies, communication via OSS or radio, a long battery life and short booking times.



Technical data

- Seamless integration with online and offline access control
- Made in Germany
- Simple and fast battery replacement
- Available for MIFARE® and LEGIC® RFID technologies
- Wireless link or OSS
- AES data encryption
- Outdoor variants
- Wake-up function to save battery power

	INTUS Flex digital cylinder	INTUS Flex digital cylinder S	INTUS Flex E-Handle	INTUS Flex locker lock	INTUS Flex wall reader
Housing	Stainless steel housing	Stainless steel housing	Stainless steel handle with integrated electronics	Plastic housing	Plastic housing
Dimensions (H x W x D)	40 x 40 x 43 mm	33 x 33 x 44 mm	Round rosette version: 55 x 140 x 76 mm Oval rosette version: 75 x 140 x 76 mm Long plate version: 290 x 64 x 76 mm Narrow plate version: 290 x 42 x 76 mm Short plate version: 170 x 46 x 76 mm	148 x 44 x 36 mm	Indoor version: 85 x 110 x 15 mm Outdoor version: 100 x 100 x 40 mm
Installation	Installation in profile cylinder holes conforming to DIN 18252 from 26/26 mm to 70 mm, special lengths available on request	Installation in profile cylinder holes conforming to DIN 18252 from 26/26 mm to 70 mm, special lengths available on request	No drilling required when using existing DIN standard holes, for all doors with a backset > 30 mm	Compatible with existing locker lock bore-holes for vertical or horizontal installation	Wall mounting, surface mounting
Battery life	up to 80,000 bookings	up to 60,000 bookings	up to 160,000 bookings	up to 120,000 bookings	-
Power supply	CR-2PE/BN 3V Lithium battery	CR-2PE/BN 3V Lithium battery	CR-123APA/BE 3V Lithium battery	CR-2PE/BN 3V Lithium battery	8 - 40V DC, 8 - 24V AC
Door type					
▪ Full-leaf doors	yes	yes	yes	-	-
▪ Tubular frame doors	-	yes	yes	-	-
▪ Fire and smoke protection doors	yes	yes	yes	-	-
▪ Doors in escape and emergency routes	yes	yes	yes	-	-
▪ Burglar-resistant doors	-	yes	-	-	-
				suitable for cabinet doors made of wood, steel or aluminum	suitable for doors with a motor lock or electronic door strike, remote relay control
Certificates	DIN 18252 DIN EN 1303 DIN EN 15684	DIN 18252 DIN EN 1303 DIN EN 15684 VdS BZ+ certificate	DIN EN 18273 DIN EN 179	-	-
Storage capacity					
▪ Bookings	up to 1,024	up to 1,024	up to 1,024	up to 1,024	up to 1,024
▪ Block list entries	up to 64	up to 64	up to 64	up to 64	up to 64
IP degree of protection	IP66 Outdoor version	IP66 Outdoor version	IP66 Outdoor version	IP30 Indoor version only	IP65 Outdoor version
Temperature range	-25 °C to +65 °C	-25 °C to +65 °C	-25 °C to +65 °C	+5 °C to +55 °C	-20 °C to +65 °C

Time for security.



PCS Systemtechnik GmbH
Pfälzer-Wald-Str. 36
81539 Munich, Germany
Tel. +49 89 68004 - 0
intus@pcs.com
www.pcs.com

Ruhrallee 311
45136 Essen, Germany
Tel. +49 201 89416 - 0

© 2025-02 PCS Systemtechnik GmbH

PCS, INTUS, DEXICON and DEXIOS are registered trademarks of PCS Systemtechnik GmbH. All other names of products and services are trademarks of the respective companies and organizations.